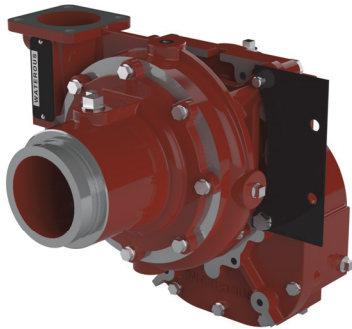




VEHICLE MOUNTED PUMP



CL Pump Performance						
GPM	l/min	l/sec	PSI	bar	kPa	MPa
500	1893	32	150	10	1000	1.0

Pump Features

- Casing:**
One-piece, high-tensile ductile iron (bronze optional on CLV only).
- Impeller:**
Bronze, fully-enclosed, double-hubbed to balance hydraulic thrust, mechanically-balanced to eliminate vibration.
- Wear Rings:**
Replaceable wear rings to increase pump life and keep maintenance costs at a minimum.
- Impeller Shaft:**
Stainless steel, heat treated, ground to precise size, and polished under shaft seal. Fully supported by anti-friction bearings.
- Shaft Seal:**
Mechanical Seal is standard.
- Intake Connection (Choice of the Following):**

Type	Model	Sizes
Threaded End Intake	CLR	4-inch NH or BSP
Victaulic® Intake	CLV	4-inch

- Discharge Connection:**
5-inch discharge flange
- Bearings:**
All bearings are oil or grease lubricated, ball-type, located outside the pump casting to accurately align and support the impeller shaft assembly. Ball bearings are deep-groove type designed to carry both radial and axial thrust.

Warranty

Waterous Seven-Year Limited Warranty

Conditions of Sales

For details on Waterous Condition of Sales, refer to F-2190, Conditions of Sales located on the Waterous web site at www.waterousco.com or by contacting Waterous.

Optional Equipment

- VENTURIS™ Air Priming System, see F-2940
- Priming System, see F-2418
- Pressure Control Systems:
 - Discharge Relief Valves, see F-897
 - Piloted Intake Relief Valves, see F-2192
 - Non-Piloted Intake Relief Valve, see F-2192-N
- Corrosion Protection – Zinc Intake Screens and Magnesium Anodes
- Overheat Protection Manager, see F-2422
- Drain Valves, see F-1158
- Discharge Valves, see F-1161
- Tachometer drive, operates at ½ input shaft speed.
- Transmissions Available:

K Series (PTO)

Housings: Aluminum
Drive Ratios: 1.62, 1.97, 2.14, 2.55, 2.79, 3.40, 4.00, 4.79
Gears: Helical, precision cut, crown shaved for proper load distribution and quiet operation.

T Series (Direct-Engine Mounted)

T Transmissions are available in SAE 2, 3, 4, or 5 bell housing adapters.
Housings: Aluminum
Drive Ratios: 1.62, 1.97, 2.14, 2.55, 2.79, 3.40, 4.00, 4.79
Gears: Helical, precision cut, crown shaved for proper load distribution and quiet operation.

PA Series (PTO)

Housings: Cast aluminum body
Drive Ratios: 1.71, 1.91, 2.05
Drive & Driven Sprockets
 All sprockets are hardened and have ground bores.
Drive Chain
 High-strength involute form chain.
Bearings
 Anti-friction ball bearings
Optional Rear Facing Output Shaft
 1-3/8-10 SAE spline for Spicer 1280 or 1310 series end yokes

Industry Leading Sales and Support

When you purchase equipment, not only do you get quality products, you get quality service. Our expert service technicians are the best in the business and they are always happy to answer any service questions you might have.

Sales/Applications Assistance
 Phone: 651-450-5234 (Press 3)
 pumpsales@waterousco.com

Service Assistance
 Phone: 651-450-5200
 Fax: 800-488-1228
 service@waterousco.com